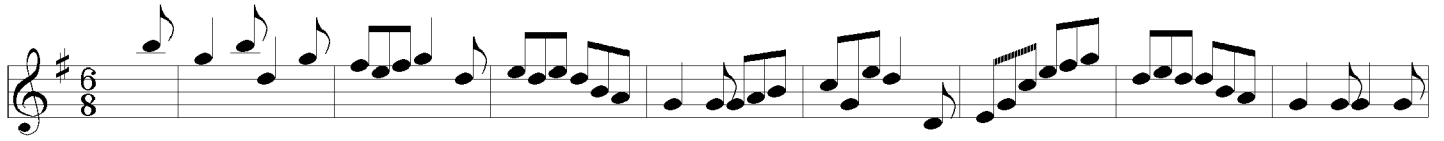


The K'nocker Jig

♩=180



G D7 G C D7 Em G7 C G/B C A7/C# G/D D7 G G7/D



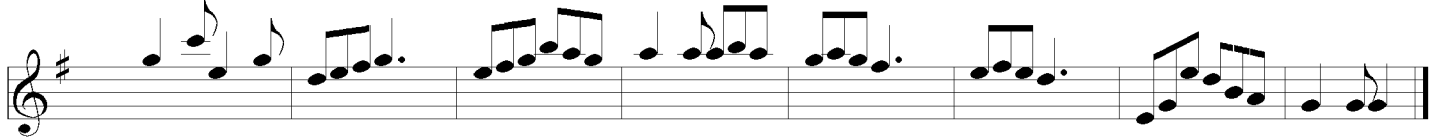
C G A D Em Bm C G C D7 G CG



G D7 G C D7 Em G7 C G/B C A7/C# G/D D7 G G7/D



C G A D Em Bm C G C D7 G CG



C G A A7 D Em Bm C G C D7 G CG
 X X X X